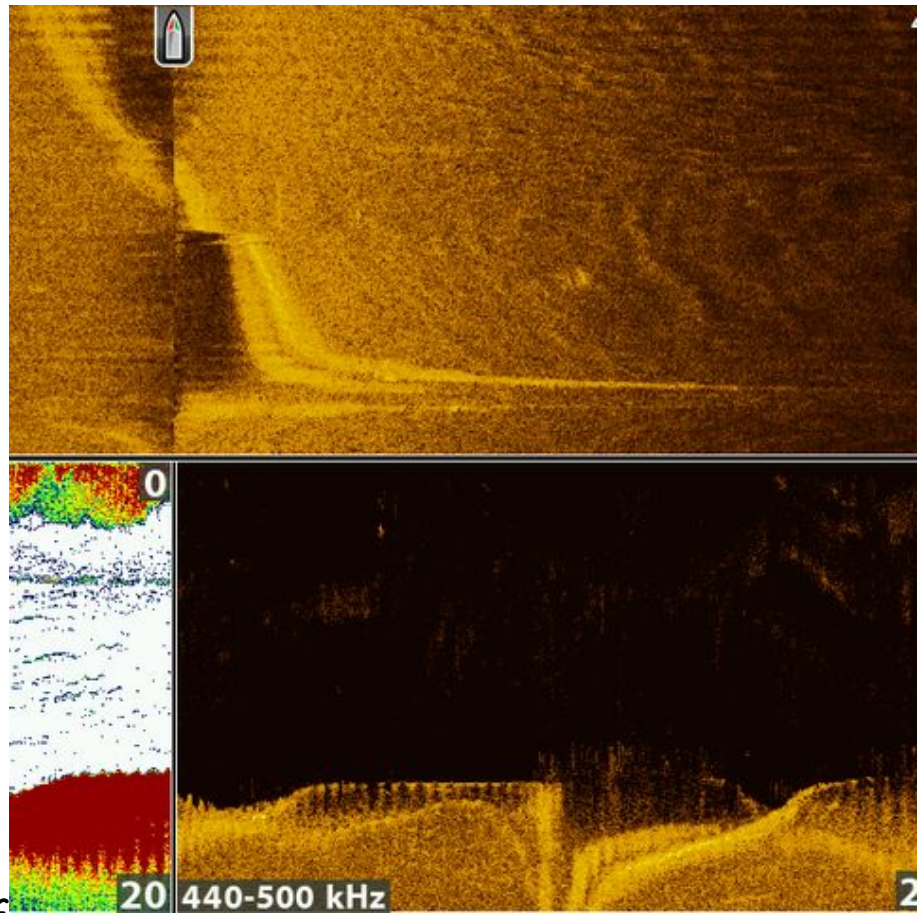




## What technical support can we offer ?

Of course, there are also more extensive projects that you can take part in, which require more or specialised equipment. For example, underwater archaeology at greater depths. Not everyone has access to a research boat, owns expensive sonar technology, an underwater robotic vehicle (ROV), or can dive themselves. fjord - research can provide the necessary technology. If a project is more demanding and requires corresponding resources, it becomes clear why such a project must be approved by our committee after it has been submitted. A decision must therefore be made as to whether our community can handle a project or whether too many resources will be tied up that will then be lacking elsewhere. We may therefore have to reject a project or postpone it until a later date .

Fjord Research is committed to supporting you in your research with the necessary technical equipment. Here's an example from wreck exploration.



## Working with Sonar

From the archival work and the nautical chart, it was assumed that the wreck of a German World War II submarine (Type 7c) was located south of the Ochseninseln. However, the wreck's position was only very imprecisely marked on the nautical chart. Only after a complex search with sonar equipment was the wreck located over 100 meters from the indicated position. High-quality sonar systems are very expensive, and their use requires training.

## Imaging procedure

---

After locating the vessel, the ROV was deployed to examine the blown-up wreck in more detail at a depth of approximately 14 meters. Imaging techniques (video recordings and photographs) were used to document the wreck in more detail. Based on the data obtained, a decision could then be made as to whether the use of divers was warranted. In this case, it was initially omitted because only widely

scattered debris was found. This may change if subsequent follow-up investigations make it necessary.

fjord - research can therefore be of great help to you in your research. Our technical capabilities are available free of charge to registered members, as far as resources and opportunities allow. The technical capabilities will be gradually expanded and improved. fjord - research is privately funded and serves exclusively to increase knowledge about the Flensburg Fjord.

<-- [How can I submit a project ?](#)